

Sorting instructions

Residual and food waste

The residual and food waste bin is picked up at the holiday home you are staying in.



- Nappies, sanitary pads, tampons, cotton swabs and similar hygiene items
- Pizza boxes and food paper
- Cat litter, dog waste bags and pet bedding
- Vacuum cleaner bags, cigarette butts, ashes and charcoal briquettes (in closed bags only)
- Coffee bags, chip bags and similar mixed packaging and other composite products



- Batteries and small electronics can be put in a small, closed clear bag on top of the everyday / food waste bin lid. These will then be disposed of at a recycling site
- Hazardous waste (chemicals, light bulbs and electronic waste) must be taken to a recycling site

PLEASE NOTE that if you don't know where the waste should go, you must throw it into the everyday waste bin.



- Fruit and vegetables (including peel)
- Leftover food, gravy, potatoes, pasta, meat and similar items
- Bones from meat
- Fish waste
- Bread and cake leftovers
- Dairy products and eggshells
- Used ground coffee, coffee filters and tea bags
- Kitchen roll and napkins with food or grease residue
- Cut flowers



- Soil from potted plants must be put into the food waste bin
- Garden waste must be disposed of at a recycling site

PLEASE NOTE that food waste must be put into the bio bags supplied - and remember to tie a knot on them when finished.

Batteries and small electronics

Batteries and small electronics must NOT be put in the everyday waste bin. They must be put in their own small (4 liter) clear bag and then placed on the top the everyday / food waste bin lid.

Local recycling stations

Cardboard, paper, plastic, beverage cartons, glass and metal must be sorted (see the opposite page) and then taken to a local recycling station.

These local recycling stations can be found near the entrance of the holiday area you are staying at. You can also see where the nearest local recycling station is, at: www.nordfynskommune.dk/affald

Recycling sites

You can take recyclable waste and hazardous waste to one of the municipality's three recycling sites:

Bogense Genbrugsplads, Industrivej 2, 5400 Bogense
Søndersø Genbrugsplads, Snavevej 25, 5471 Søndersø
Otterup Genbrugsplads, Ørkebyvej 15, 5450 Otterup



Thanks for visiting us and thank you for taking care of our beautiful nature!



**nordfyns
kommune**

Cardboard, paper, plastic, beverage cartons, glass and metal

Must be sorted and taken to a local recycling station.



- Newspapers, magazines and advertisements without plastic covers
- Letters and envelopes (including window envelopes)
- Cardboard packaging from breakfast cereals, toothpaste, and similar items
- Egg trays, drawing paper and similar items
- Cardboard and corrugated cardboard
- Cardboard tubes
- Books



- Wet or dirty cardboard or paper should be put into the everyday waste bin
- Pizza boxes must be put into the everyday waste bin
- Gift wrapping and ribbons must be put into the everyday waste bin

PLEASE NOTE that cardboard and paper must be clean, dry and free of food residue and then placed loosely in the correct bin.



- Both hard and soft plastics
- Empty plastic packaging, plastic pots / containers, bottles without a deposit mark*, buckets and similar items
- Milk and juice cartons (including plastic lids)
- Plastic bags and plastic wrap
- Disposable plastic cutlery
- Bubble wrap
- Plastic lids, plastic plant pots and plastic egg cartons
- Plastic shampoo and conditioner containers



- Plastic food containers that cannot be emptied and rinsed must be put into the everyday waste bin
- Flamingo and PVC (e.g. rubber boots or rainwear**)
- Building waste (e.g. wood or plastic waste pipes**)
- Bottles and cans with danger labels**
- Plastic toys containing electronics**

PLEASE NOTE that all plastic packaging must be emptied and rinsed before it is disposed of at the local recycling station.

** The Danish deposit / return mark is called PANT A, B, C.*

*** Must be taken to a recycling site.*



- Wine and beer bottles without a deposit mark*
- Empty jam, pickled product jars and similar items
- Drinking glasses and jugs, including shards of glass (without metal or plastic lids)
- Other glass packaging

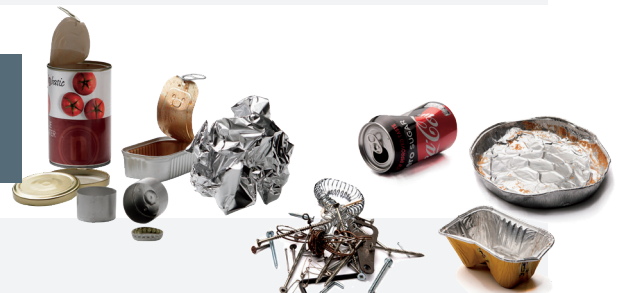


- Mirrors**
- Window glass**
- Ceramics and porcelain**
- Stoneware (e.g. ovenproof crockery)**
- Metal and plastic lids must be sorted into the correct metal and plastic waste bins

PLEASE NOTE that all glasses and bottles must be emptied, rinsed and then placed loosely in the correct bin.

** The Danish deposit / return mark is called PANT A, B, C.*

*** Must be taken to a recycling site.*



- Empty beer and fizzy drink cans without a deposit mark*
- Empty and rinsed metal packaging (such as cans)
- Metal lids from plastic and glass packaging
- Pots, pans, cutlery, kitchen knives, beer caps and empty tealight candle cups
- Tin foil and foil trays
- Tools without electrical parts



- Spray cans**
- Pressure cylinders**
- Wires and electronics**

PLEASE NOTE that cans and other metal packaging that has contained food, must be emptied, rinsed and then placed loosely in the correct bin.

** The Danish deposit / return mark is called PANT A, B, C.*

*** Must be taken to a recycling site.*